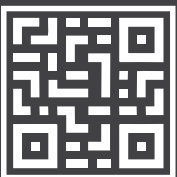
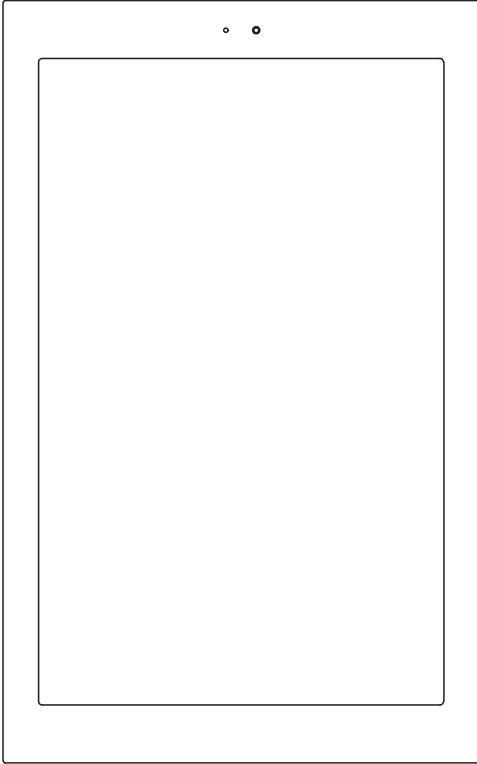
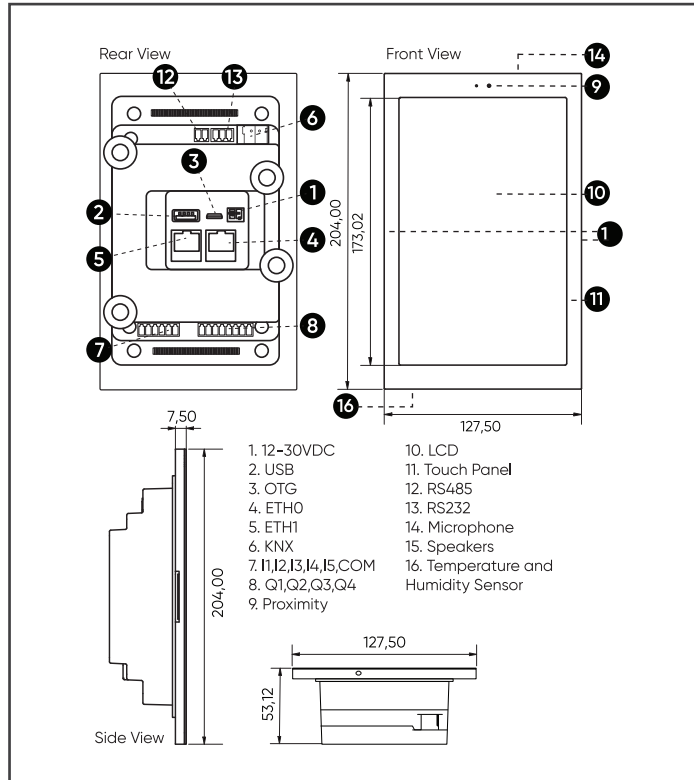


## QUICK START GUIDE

8" Touch Panel  
OPT-TP8-111

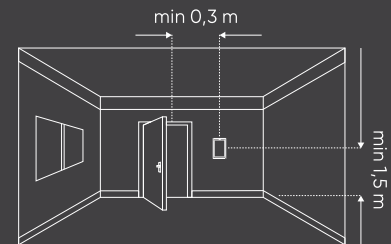


## COMPONENTS

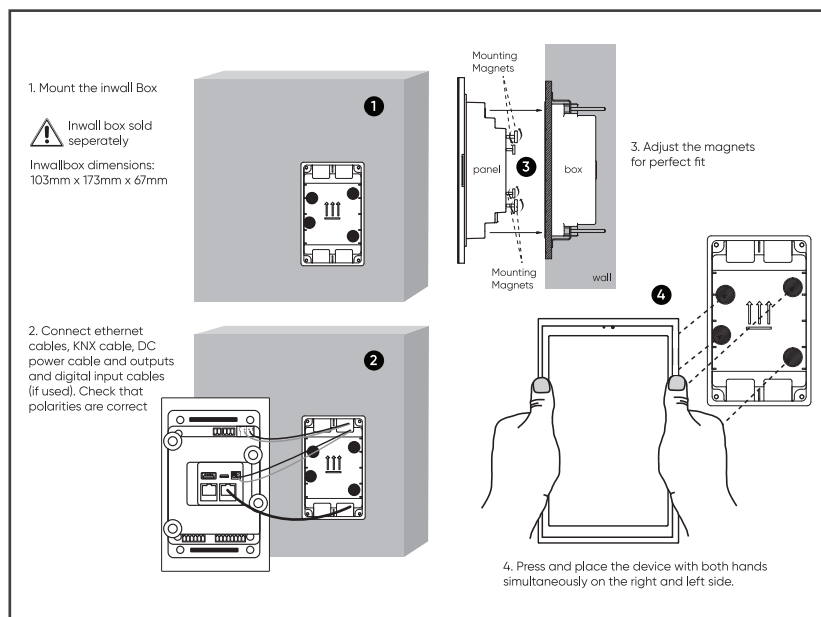


## SAFETY REMARKS

- Installation, electrical connection, configuration and commissioning of the device can only be carried out by qualified personnel in compliance with the applicable technical standards and laws of the respective countries.
- The electrical connection of the device can only be carried out by qualified personnel. The incorrect installation may result in electric shock or fire. Before making the electrical connections, make sure the power supply has been turned off.
- Do not connect the main voltage (230V AC) to VDC input, digital input and KNX connector of the device.
- Opening the housing of the device causes the immediate end of warranty period.
- In case of tampering the compliance with the essential requirements of the applicable directives, for which the device has been certified, is no longer guaranteed.
- To clean use a dry cloth. It must be avoided the use of solvents or other aggressive substances.
- Contact with fluids to the plate and socket is to be avoided.
- The device can not be installed close to the heat sources such as radiators or house hold appliances or in position subjected to direct sunlight.
- The device has to be installed preferably on an internal wall at the height of 1,5m and at least 0,3m far from



## MOUNTING

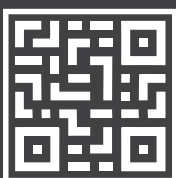


## COMMISSIONING

- 8" Touch Panel is configured via built-in web interface. Ethernet network interface is set to DHCP mode by default.
- Connect 8" Touch Panel to a network that has DHCP server via home or building network.
- Go to setting is 8" Touch Panel user interface and then get IP address of Touch Panel. If there is no DHCP server on network, set IP address of Touch Panel manually. For this check programming manual.
- Enter IP address to web-browser, then enter username and password.

**Default username: webAdmin**  
**Default password: wa1234**

- For support in further steps, check Programming Manual.



## Technical Specifications Touch Panel

### EDGE 10"

### EDGE 8"

|                               | EDGE 10"  | EDGE 8"   |
|-------------------------------|---|---|
| CPU                           | Quad Core ARM Cortex - A35 @1.3GHz              | Quad Core ARM Cortex - A35 @1.3GHz              |
| Memory                        | 1 GB  | 1 GB  |
| Hard Disk                     | 8 GB EEMC                                       | 8 GB EEMC                                       |
| Operating System              | Android 8.1                                     | Android 8.1                                     |
| Power                         | 12-30 VDC                                       | 12-30 VDC                                       |
| Screen Size                   | 10.1"   | 8"  |
| Resulation                    | 1280px x 800 px                                 | 800px x 1280px                                  |
| Installation                  | "Flash Mounting in Eclipse Inwall Box "         | "Flash Mounting in Eclipse Inwall Box"          |
| Microphone                    | 1 with Echo Cancellation                        | 1 with Echo Cancellation                        |
| Speaker                       | 2x8 Ohm -2 Watts                                | 2x8 Ohm -2 Watts                                |
| Input                         | 5 Digital Inputs                                | 5 Digital Inputs                                |
| Output                        | No  | No  |
| Knx Bus Connection            | KNX-TP / KNX-IP                                 | KNX-TP / KNX-IP                                 |
| RS-485                        | No  | No  |
| RS-232                        | No  | No  |
| LAN                           | 1   | 1   |
| Wifi                          | No  | No  |
| Thermostat Logic              | No  | No  |
| Sensor                        | No  | No  |
| IoT Integration               | "IFTT,Amazon Alexa,Google Home, Siri Shortcuts" | "IFTT,Amazon Alexa,Google Home, Siri Shortcuts" |
| Max Accessory Limit           | 254   | 254   |
| Max Room Limit                | 254   | 254   |
| Intercom Standart             | SIP 2.0 Peer-to-Peer                            | SIP 2.0 Peer-to-Peer                            |
| Onwall Dimentions (w x h x d) | 249mmx168mmx7mm                                 | 127mmx204mmx7mm                                 |
| Front Casing                  | Plastic Casing                                  | Plastic Casing                                  |

## Wall Box

