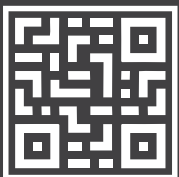
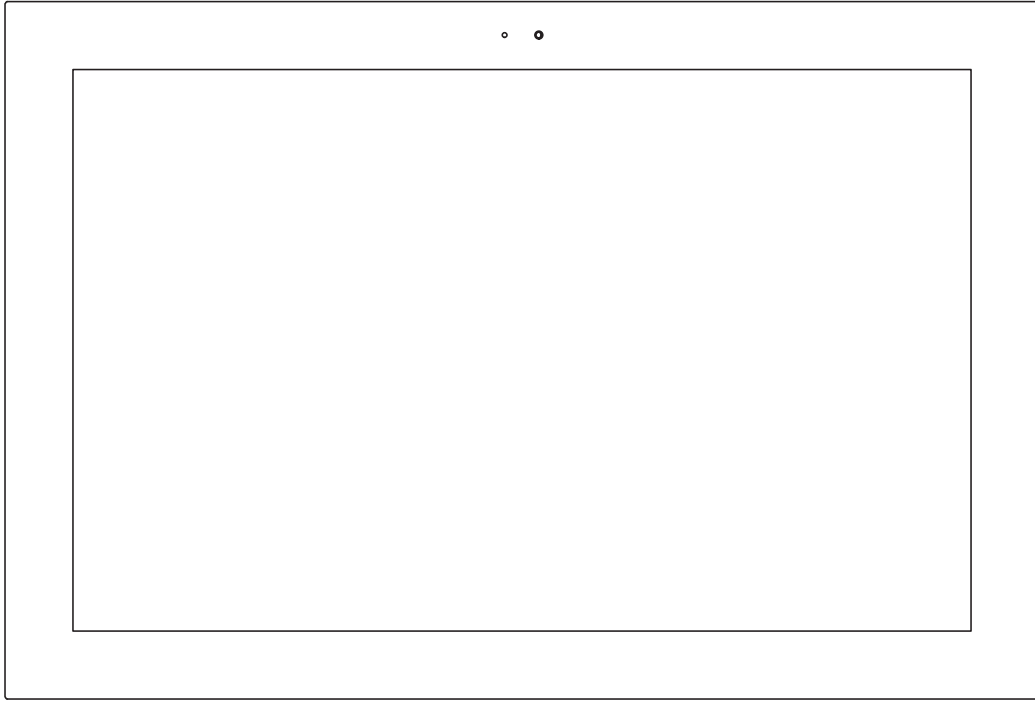


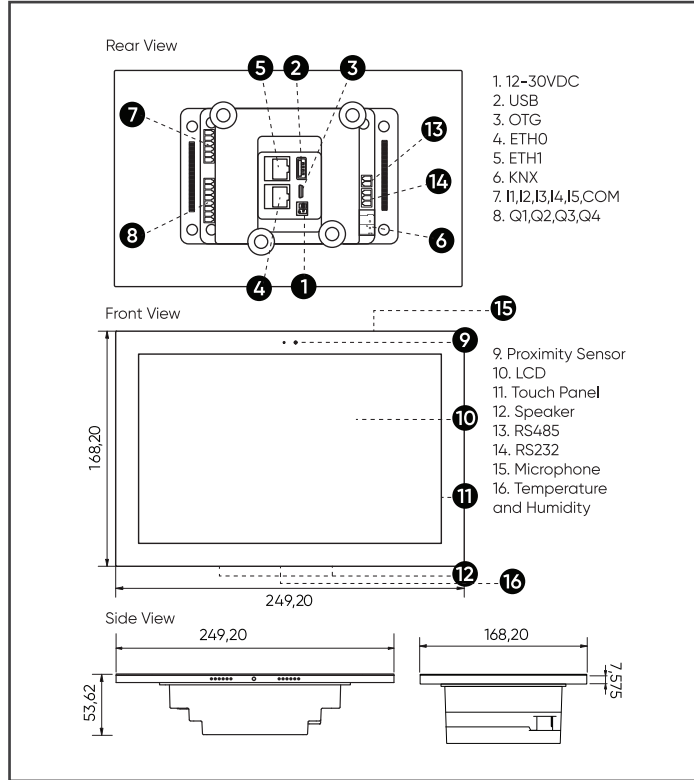


QUICK START GUIDE

10" Touch Panel
OPT-TP10-111

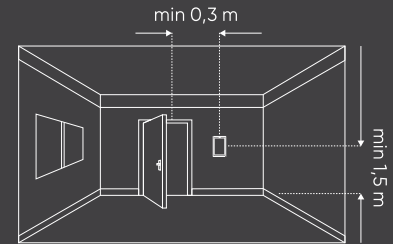


COMPONENTS

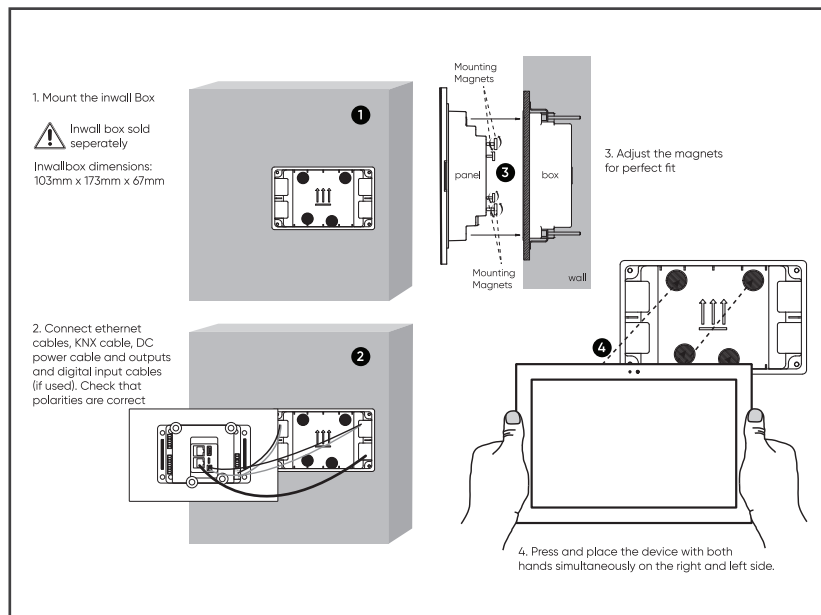


SAFETY REMARKS

- Installation, electrical connection, configuration and commissioning of the device can only be carried out by qualified personnel in compliance with the applicable technical standards and laws of the respective countries.
- The electrical connection of the device can only be carried out by qualified personnel. The incorrect installation may result in electric shock or fire. Before making the electrical connections, make sure the power supply has been turned off.
- Do not connect the main voltage (230V AC) to VDC input, digital input and KNX connector of the device.
- Opening the housing of the device causes the immediate end of warranty period.
- In case of tampering the compliance with the essential requirements of the applicable directives, for which the device has been certified, is no longer guaranteed.
- To clean use a dry cloth. It must be avoided the use of solvents or other aggressive substances.
- Contact with fluids to the plate and socket is to be avoided.
- The device has to be installed preferably on an internal wall at the height of 1,5m and least 0,3m far from doors.
- The device can not be installed close to the heat sources such as radiators or house hold appliances or in position subjected to direct sunlight.



MOUNTING

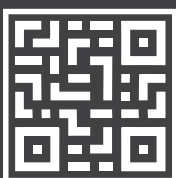


COMMISSIONING

- 10" Touch Panel is configured via built-in web interface. Ethernet network interface is set to DHCP mode by default.
- Connect 10" Touch Panel to a network that has DHCP server via home or building network.
- Go to setting is 8" Touch Panel user interface and then get IP address of Touch Panel. If there is no DHCP server on network, set IP address of Touch Panel manually. For this check programming manual.
- Enter IP address to web-browser, then enter username and password.

Default username: webAdmin
Default password: wa1234

- For support in further steps, check Programming Manual.



Technical Specifications Touch Panel

	EDGE 10 "	EDGE 10"
CPU	Quad Core ARM Cortex - A35 @1.3GHz	Quad Core ARM Cortex - A35 @1.3GHz
Memory	1 GB	1 GB
Hard Disk	8 GB EEMC	8 GB EEMC
Operating System	Android 8.1	Android 8.1
Power	12-30 VDC	12-30 VDC
Screen Size	10.1"	8"
Resulation	1280px x 800 px	800px x 1280px
Installation	"Flash Mounting in Eclipse Inwall Box "	"Flash Mounting in Eclipse Inwall Box"
Microphone	1 with Echo Cancellation	1 with Echo Cancellation
Speaker	2x8 Ohm -2 Watts	2x8 Ohm -2 Watts
Input	5 Digital Inputs	5 Digital Inputs
Output	No	No
Knx Bus Connection	KNX-TP / KNX-IP	KNX-TP / KNX-IP
RS-485	No	No
RS-232	No	No
LAN	1	1
Wifi	No	No
Thermostat Logic	No	No
Sensor	No	No
IoT Integration	"IFTT,Amazon Alexa,Google Home, Siri Shortcuts"	"IFTT,Amazon Alexa,Google Home, Siri Shortcuts"
Max Accessory Limit	254	254
Max Room Limit	254	254
Intercom Standart	SIP 2.0 Peer-to-Peer	SIP 2.0 Peer-to-Peer
Onwall Dimentions (w x h x d)	249mmx168mmx7mm	127mmx204mmx7mm
Front Casing	Plastic Casing	Plastic Casing

Wall Box

